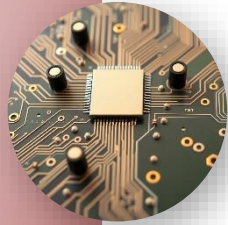


LG Corp. Value-up Plan

2025 Progress





Disclaimer

This presentation has been prepared by LG Corp. (the “Company”) solely for informational purposes in its disclosure of the corporate value improvement plan to investors of the Company. The information contained in this presentation has not been reviewed by the independent and external verification.

No representation or warranty express or implied is made as to the fairness, accuracy, completeness or correctness of the information or any opinion contained herein.

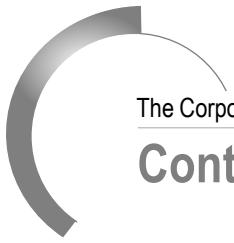
The information contained in this presentation should be considered in the context of the circumstances prevailing at the time and may not be updated to reflect material developments that may occur after the date of the presentation.

Neither the Company nor any of its affiliates, officers, directors or advisors shall have any civil, criminal or administrative liability whatsoever (willful, in negligence or otherwise) for any loss arising from any use, by any shareholder or investor of the Company, of this presentation or its contents or otherwise arising in connection with this presentation.

This presentation can contain forward-looking statements, which are subject to certain risks and uncertainties that could cause actual results to differ materially from those contemplated by the relevant forward-looking statement. None of the future projections, expectations, estimates or prospects in this presentation should be taken as forecasts or promises nor should they be taken as implying any indication, assurance or guarantee that the assumptions on which such future projections, expectations, estimates or prospects have been prepared are correct or exhaustive or, in the case of assumptions, fully stated in the presentation. The Company also cautions that forward-looking statements are subject to numerous assumptions, risks and uncertainties, which change over time and which may be beyond the Company’s control. The Company assumes no duty to and does not undertake to update any forward-looking statements to reflect actual results, changes in assumptions or changes in factors affecting these statements.

Certain data in this presentation was obtained from various external data sources, and the Company has not verified such data with independent sources. Accordingly, the Company makes no representations as to the accuracy or completeness of that data, and such data involves risks and uncertainties and is subject to change based on various factors.

This presentation does not constitute solicitation for the recruitment, sale, or subscription of shares and no part of the presentation shall constitute an invitation to relevant contracts and arrangements or investment decisions.



C o n t e n t s

1. Overview	03
2. Shareholder Return	04
3. ROE	05
4. Governance	06



◀ Promotion of Efficient Capital Allocation for ROE Improvement ▶

The Corporate Value-up Plan (Nov. 2024)

- **Cancellation of All Treasury Shares by 2026**
- **Increased the Minimum Dividend Payout Ratio by 10%p (50%→60%)**
- **Interim (Half-year) Dividend from FY25**



- **Target ROE of 8~10% by 2027**



Yearly Progress (2025)

- **Cancelled 50% of Treasury Shares Held (Sep. 2025)** In Progress
- **FY24 Dividend Payout Ratio : 76%** Completed
- **Interim Dividend of 1,000 Won per share (Sep. 2025)** Completed

- **ROE hit its lowest point in 2024, but an improvement trend is expected from 2025** In Progress

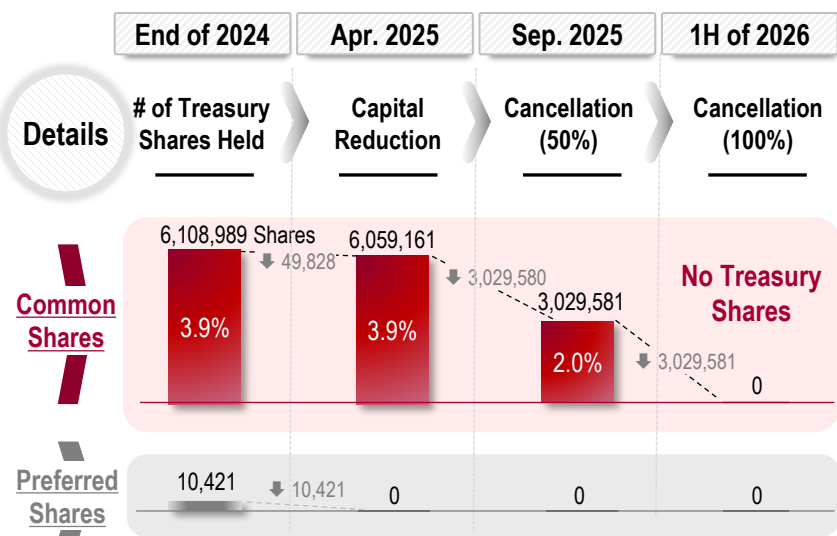
1
Shareholder Return

2
ROE



Progress

Progress on the Cancellation of Treasury Shares to Enhance the Shareholder Value



Improved Dividend Policy & Shorter Dividend Cycle

- Increased the Minimum Dividend Payout Ratio : 50% ➔ 60%
- Introduced Interim Dividend (1,000 Won/share paid in Sep. 2025) with flexible dividend record date

New Announcements

All Treasury Shares(2.0%) to be Cancelled within 1H'26

(Future buybacks to be decided with cancellation as a premise) Update

The Sale of a Real Estate Asset New

【Overview of Gwanghwamun Building Sale】



- Size : Total 19 Floors
- Date of Sales : 31 Dec. 2025
- Sales Amount : Approx. KRW 400B (After Tax)



【Utilization Plan for Building Sale Proceeds】

Allocation to ① Future Investments & ② Shareholder Return to be Reviewed

① Future Investments

Meaningful investments focused on areas A, B, and C

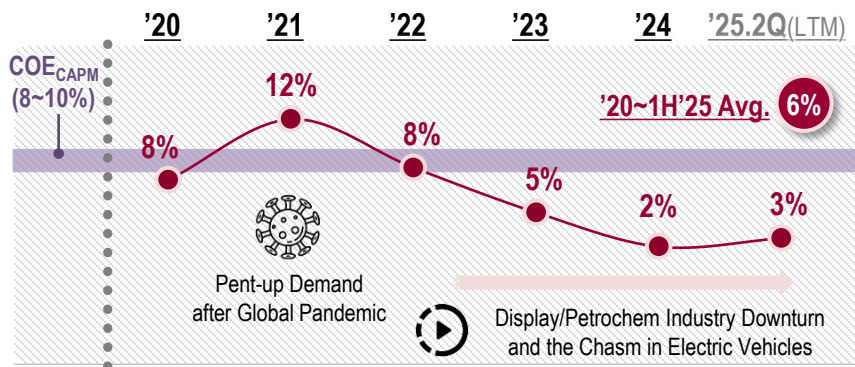
② Shareholder Return

Certain portion of resources to be allocated for shareholder return (Details TBD by the Board)



Progress

Consolidated ROE Trend



(KRW T)

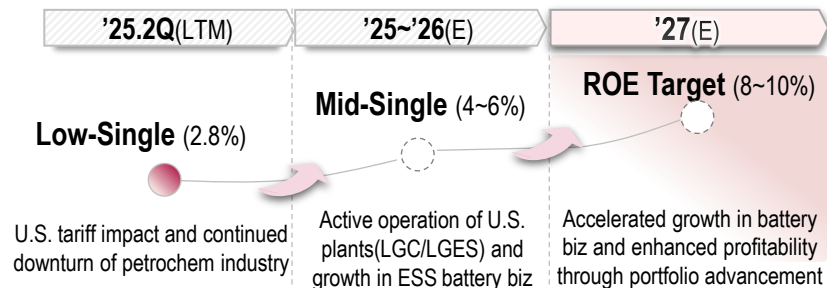
Account	'20	'21	'22	'23	'24	'25.2Q(LTM)
Return	1.5	2.6	2.0	1.3	0.6	0.8
Equity	19.5	20.8	23.3	25.8	26.6	26.9

Analysis

- LG Corp's ROE peaked in 2021 and has been on a downward trend due to the impact of equity method gains from its subsidiaries.
- Due to the downturn of display/petrochem business and the impact of the EV chasm, ROE marked the bottom in 2024, but an improvement trend is expected from 2025.

Outlook

Consolidated ROE Outlook¹⁾

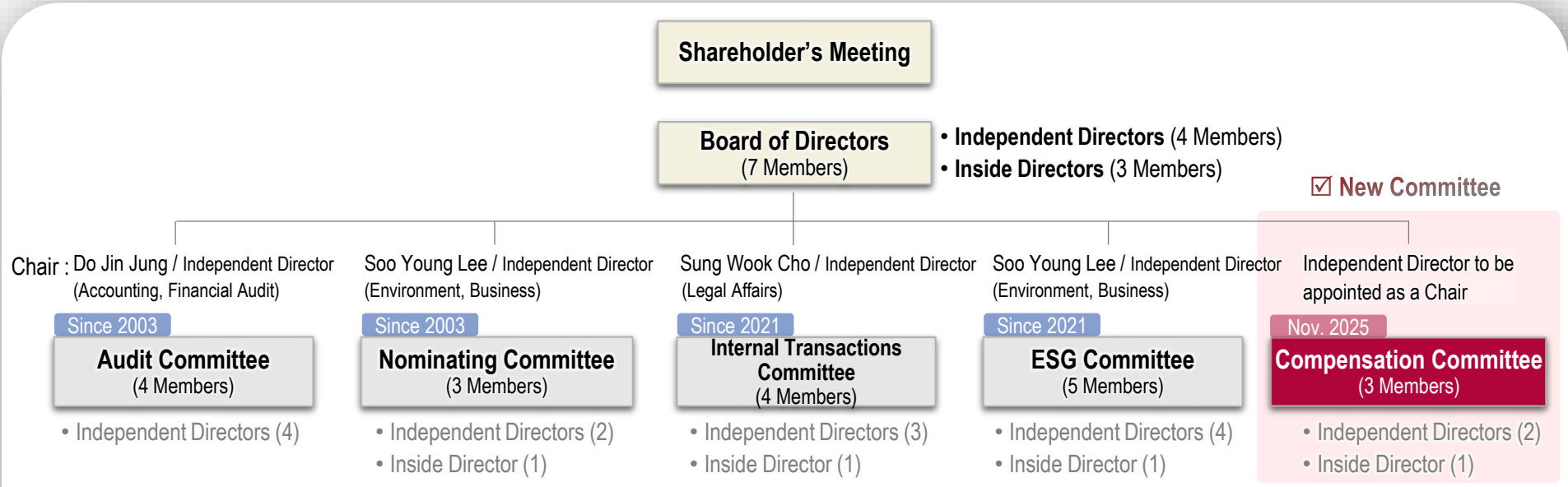


Strategies for Enhancing ROE

Return	• Solid investment performance in areas A, B, and C ²⁾
	• Enhanced mid-to-long-term competitiveness of LG affiliates [Electronics] Portfolio Enhancement(expansion of B2B and non-hardware business) and Identification of Growth Opportunities [Chemical] Business Improvement through Financial Structure and Operational Efficiency [Telecom&Services] Proactive Response to Demand for AX and Cloud
	• Capital efficiency through the utilization of Gwanghwamun Building sale proceeds, etc.

1) Based on estimated mid-to-long-term business plans of LG Corp. and its subsidiaries
2) AI/Enterprise Software, Bio/Healthcare, Clean Tech/Sustainability

Board Composition that enables Prompt and Efficient Decision-making



- **Fair and Independent Board of Directors and the Committees under the Board**
 - The BOD and the committees consist of a majority of independent directors and each committee is led by an independent director with relevant expertise
- **Establishment of Compensation Committee to ensure procedural fairness in compensation and to better protect shareholder interest**
 - Consist of 3 members, with a majority being Independent Directors, and an Independent Director will be appointed as the chair to ensure independence

※ LG Corp complied with 13 out of 15 key governance indicators in the KRX Corporate Governance Report 2024, showing 2 improved indicators (AGM to be held on a non-concentrated day, Provision of dividend predictability) from the previous year.

Appendix : Board of Directors

Kwang Mo Koo



- Chairman and CEO, LG Corp.

Bong Seok Kwon



- Vice Chairman, LG Corp.

Beom Jong Ha



- President and CFO, LG Corp.

Sung Wook Cho



- Current Partner, Yoon&Yang LLC
- Director of the Daejeon Prosecutors' Office
- Director of the Gwangju Prosecutors' Office

Soo Young Lee



- Current Advisor, Yoon&Yang LLC
- Executive Officer, Eco Management Korea Holdings, Inc.
- Member of Presidential Commission on Green Growth

Jong Su Park



- Current Professor, Korea University Law School
- President, Korean Academic Society of Taxation
- Non-standing Member, the Central Administrative Appeals Commission

Do Jin Jung



- Current Professor, Chung-Ang Univ. Business School
- Current Vice Chairman, Korean Accounting Association
- Member of International Public Sector Accounting Standards Board(IPSASB)